



# Centerline

*A monthly publication dedicated to communicating the latest local & regional dressage news & information to enrich Oklahoma dressage riders' equestrian experience.*

OCTOBER

2021

## FREE ODS Clinic for 2021 Volunteers!

Is it possible!? **FREE** educational clinic? **YES!** See inside for details! **Pg 2, 5**

## USDF Annual Convention Goes Virtual

Just as interesting as a live event, the USDF annual convention goes virtual. **Pg 3**

## ODS Holds "L" Program in 2022

There's lots to look forward to in 2022 including this unique educational opportunity! **Pg 4**

## Congrats ODS Member Competitors @ Region 4 Champs!

Simply amazing! **Pg 11**

## TDF Updates

Grants & Giving - lots going on at this wonderful organization! **Pg 12**

## GCC Events

Finish out the year strong with several shows hosted by GCC! **Pg 13, 15, 16**



## USDF Annual Convention: Dec 1-4, 2021 - A Virtual Experience



## Letter From The President

Hello Friends,

Are you loving the cool mornings? I sure am, even if it means putting on a hoodie or vest. My horses have found a new spring in their step, and that energy I was wishing for in August is finally back during our rides! We are all having fun!

We are still looking at several events this month, the **GCC Schooling Shows** plus their **Championships**. Plans are finalized for the **Free Volunteer Clinic**, to be held October 24, taught by Roberta Clark at her farm in Tulsa. Come join us... this close to Halloween, there will be chocolate!! Our ODS members who rode at **Regional Finals** are back with lots of successes! Look for their photos on the \*congratulations\* page. Two of them, Erin Nelson and Kristin Knutson will be heading for the **USDF National Finals** in Kentucky! Best of luck! How fabulous to have Oklahoma represented. And don't forget the **USDF Convention** at the beginning of December. USDF made the announcement that they decided to go virtual again this year. Sad not to have the live event, but the virtual format certainly opens it up to more members. Be sure to join in: they have an excellent selection of educational programs.

There is a lot of discussion going on between the **Education Committee** and the **Vision Committee**, working together to make plans for the future year and beyond. Our first event is, of course, the **Spring Symposium** with **Lilo Fore**, very exciting! Look in the newsletter for information on putting on the **USDF "L" Program**! We have some other ideas, and are always looking for more things to do. Do **you** have ideas? Think about participating in the **Vision committee**! It doesn't take as much time as it takes ideas and help putting things together. Help us, *and your club*, continue to offer great activities!

Happy and safe riding!

~ Kay



## New ODS Registered Horses

2530 - Bubba Bailey- Den Burette

## ODS FREE Volunteer Clinic Oct 24 in Tulsa - Rider Spots Still Available!

ODS is thankful for its amazing volunteers! So many shows and special events are made possible only because of the hard work and dedication of member volunteers. To shows "THANKS," ODS is hosting a clinic that is FREE on October 24 for qualifying volunteers. For details, see the flyer in this issue.

## 2021 US Dressage Finals in KY this November

The 2021 US Dressage Finals, to be held November 11-14, in Lexington, Kentucky at the Kentucky Horse Park, is a national, head-to-head competition that showcases competitors in adult amateur and open divisions, at Training Level through Grand Prix. And new for 2021, the US Dressage Finals will also feature a Junior/Young Rider division!

Want to go? If you attend this event and volunteer, meals and event attire (to wear during volunteer hours) will be provided! Anyone who volunteers two or more consecutive days will be provided double occupancy hotel accommodations! For more details on volunteering and to apply, visit: <https://www.usdf.org/usdressagefinals/event/volunteer.asp>



*Thank you,  
ODS Sponsor,  
Double Lazy E  
Ranch!*

**DEIS**

Over 28 years of experience in the Equine and Wellness Industries

Call today for pricing, specials, and multiple horse discounts!

**(620) 202-0408**

Certified Equine Sports Massage Therapist  
Licensed Massage Therapist in TX, OK, MO  
Medical Massage Practitioner  
Certified PEMF Practitioner





## 2021 USDF Annual Convention: Online!



USDF invites you to attend the 2021 Adequan®/USDF Annual Convention, December 1st through December 4th, now in an online virtual convention format!

The annual USDF convention will take place December 1-4 through a series of Zoom webinars and video chats. As always, it will be in a format for members and attendees to play active roles in USDF governance. The convention website will be the hub where participants can find the latest information, including the virtual agenda, open forum details, and plans for the return of the Salute Gala.

For the second year in a row, registration will be **FREE**. So make sure to sign up for updates on the convention website and follow USDF on social media to be notified when registration is open.

For registration, please visit the **convention website** (<https://www.usdf.org/convention/registration.asp>). If you have further questions, please contact [eventregistration@usdf.org](mailto:eventregistration@usdf.org) or call 859-271-7871.

Please visit the convention **website** (<https://www.usdf.org/convention/>) to learn more about the newly revamped agenda, educational offerings, and other important information.



# Save the date!!

## ODS Annual General Meeting

### January 22, 2022

## Tulsa Country Club

- *Business Meeting*
- *Board Elections*
- *Banquet*
- *Awards Presentations*

*Details TBA*



## USDF “L” Program - Why and What?

**Why** is ODS considering engaging on this Program, a very ambitious task? We as a club had actually agreed to do this back in January 2020 at the AGM. The Education Committee proposed it to the membership present, it was enthusiastically received and voted on. Well, we all know what happened in 2020.... nothing. Programs elsewhere in the country were cancelled as everything shut down. We were uncertain as to how things would open up in 2021, and now we feel confident that we can move forward with planning. ODS first presented the “L” Program in 2000, which is when most of the current “L”s graduated. We felt it had so much value, we did it again in 2010, and it seems good timing to bring it out again. What are the benefits of putting this on?

- Anyone interested in showing (or just riding better) can benefit from learning the methodology of judging, what the judges are trained to look for, how they are taught to evaluate tests and come up with standardized scores. Ever wonder why you got a 6 and the horse behind you got an 8? This is the place to learn about that.

- It is open to all riders of any level, amateur or open, and the focus is on the lower levels of Intro, Training, First and Second. This is a premier educational opportunity for auditors!

- We will be looking for demonstration riders. This is an opportunity to ride, at *no charge* for USDF Judges who comprise the “L” faculty, learning about your own horses, how to improve your rides, without the pressure or expense of a clinic or show.

- ODS only has four active “L” Graduates to service all our schooling shows. Those four also are requested at shows in Kansas, Texas and Arkansas. If local “L”s cannot be found the shows have to bear the expense of bringing out-of-state judges. The current “L”s need a break and ‘new blood’ needs to be out there!

- Having spoken with the USDF Education Coordinator, we found that there are currently no plans for an “L” Program anywhere in the Midwest, meaning we will certainly have a good selection of candidates applying to participate in the program, which will assure financial security.

- Auditing this program will provide all “L”s in the area their required continuing education, enabling them to improve their skills.

### **What** is the “L” Program?

The USDF Judges’ Committee developed the Learner Judges Program (or the “L” Program) several decades ago to initiate the process of teaching judges to evaluate the correct training of dressage horses, as seen in the show arenas. This is the first step in the very long process of becoming a USEF “r”, “R”, and ultimately the “S” Judges. An “L” Graduate has become the standard for judging at local level schooling shows, respected for their participation in extensive standardized training and continuing education.

The USDF program is open to candidates who have earned specified scores at recognized shows. They must have two scores of 65%+ at Second Level Test 3 and one score of 62%+ at Third Level (any test), or three scores at Third Level or above. The three scores must come from three different judges.

The program is divided into two parts; each part is made up of three sessions.

**Part 1** “A Judge’s Perspective” is open to all USDF Members, whether they desire to become candidates or attend as auditors. This is the educational foundation of the Program.

- \*Session A is an introduction to judging and biomechanics of horses and movement.

- \*Session B is about the criteria of judging gaits & paces; movements & figures

- \*Session C is about the Collective marks, equitation, rider biomechanics, and basics

**Part 2** “Candidates Evaluation” is open to participating members with the three required scores. This part is geared toward those who are interested in graduating from the program to officiate at schooling shows or are interested in applying for the USEF “r” Judge Training Program

With all that being said, we will be continuing on with plans to implement this Program. Sherry Guess oversaw the program in 2010, and she has kindly agreed to take on this task. Details will be worked out and announced as Sherry becomes engaged with the project. She will remain the primary coordinator and contact for USDF, and all arrangements will be finalized through her.





IS HAPPY TO ANNOUNCE

our **THIRD ANNUAL VOLUNTEER FREE CLINIC !!!**

**OCTOBER 24, 2021**

Our clinician this year will be

**Roberta Clark**

ODS latest achiever of the  
USDF Gold Medal



LOCATION:

Clark Farm 1413 E. 64<sup>th</sup> Street  
Tulsa, OK

Contact Roberta directly if you require stabling: 918.605.3263

This is a clinic offered *free of charge* to celebrate the value we feel toward you volunteers who often spend your time giving to the club when you could otherwise be riding! We appreciate every one of you for what you do, and this is our way to give back to those of you who ride.

**ELIGIBILITY:** You must be an ODS member and have volunteered in some fashion to have helped ODS or GCC put on their events, or have supported ODS in some other way. Events include the April Judges weekend with Dolly Hannon; the ODS May show in Tulsa; the GCDC Show in Claremore, the ODS Summer Show in Shawnee, the GCC Schooling shows. Other duties may include serving on either the ODS Board, or the GCC Board, served on a committee, or some unseen thing you have done for us.

#### APPLICATION

NAME \_\_\_\_\_ PHONE \_\_\_\_\_

EMAIL \_\_\_\_\_

VOLUNTEER DUTIES: (Event and estimated number of hours) \_\_\_\_\_

NAME OF HORSE \_\_\_\_\_ LEVEL WORKING \_\_\_\_\_

TRADITIONAL \_\_\_\_\_ WD \_\_\_\_\_

SCHEDULE PREFERENCE MORNING \_\_\_\_\_ AFTERNOON \_\_\_\_\_ EITHER \_\_\_\_\_

Limited to 10 Riders

First come: first accepted. Number of hours volunteered will also be considered in the event the clinic overfills.

Liability releases for both ODS and Clark Farm must be signed before riding.

Junior riders **MUST** have Parent/Guardian signature

RETURN APPLICATION TO: Kay Kamish 25395 South 4130 Road #B Claremore, OK 74019

QUESTIONS?? ~ Call Kay 918.808.6128 or email: [kkamishods@aol.com](mailto:kkamishods@aol.com)





EMPOWER

Good nutrition is only half  
of the story.

Some horses need more than a high-quality feed to keep them looking and feeling their best. Adding Empower® Digestive Balance Supplement to their regular feed promotes better nutrient absorption, improved overall health, digestive pain and stress relief, and encourages optimal performance. It may just be the advantage you're looking for.

**VISIT [NUTRENAWORLD.COM/EMPOWER-DIGESTIVE-BALANCE](https://www.nutrenaworld.com/empower-digestive-balance)**

HELP YOUR HORSE FEEL MORE RELAXED AT THE SHOWS  
Containers Marine Calcite Calcium for 2X the buffering capacity.  
ButiPEARL (zinc & butyric acid) to help prevent Leaky Gut, & Pre & Probiotics  
(858) 254-1884  
Available at Nutrena Dealers Nationwide

© 2020 Cargill, Incorporated. All rights reserved.

*Thank you, ODS Sponsor, Nutrena!*





# Oklahoma Dressage Society

## Ladies Polo's & Hat Order Form



\$35.00

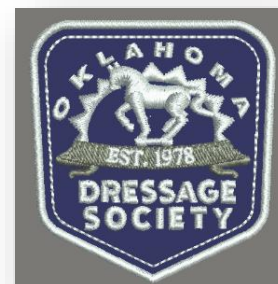


Sun Hat w/ Concealable Sun Flap  
UPF30+ Navy

\$35.00



\$25.00



### Ladies & Men's Contrast Stitch Micropique Sport-Wick Polo \$35.00

Royal	Ladies / Men's	XS	S	M	L	XL	2XL	3XL
Navy	Ladies / Men's	XS	S	M	L	XL	2XL	3XL
Pink Raspberry	Ladies / Men's	XS	S	M	L	XL	2XL	3XL

Sun Hat w/ Concealable Sun Flap – Navy \$35.00

Adjustable Ripped and Distressed Cap -Navy \$25.00

Please contact Pamela DeVore with any questions (303) 902-6181  
or email [pamelad68@aol.com](mailto:pamelad68@aol.com)





# Pine Ridge

## EQUINE HOSPITAL

Pine Ridge Equine Hospital, PLLC is a full service equine hospital that provides **24/7** surgery, medical, ambulatory, & emergency care. Our veterinarians are experienced in all types of conditions and treatments. Beyond first rate horse care, we make our clinic comfortable, friendly, and a very calm environment so your horse can relax and look forward to meeting his or her own veterinarian.

### **Pine Ridge's services include, but are not limited to, the following:**

- Acupuncture
- Chiropractic
- Coggins
- Dentistry
- Emergency
- Endoscopy/Gastroscopy
- Health Certificates
- In-House Laboratory
- Lameness Exams
- Laser Therapy
- Microchipping
- Pre-Purchase Exams
- Radiology
- Regenerative Therapies
  - Stem Cell, PRP, IRAP
- Reproductive
- Shockwave Therapy
- Surgeries
  - Elective & Emergency
- Ultrasonography
- Wellness
  - Deworming, Vaccines

**918-827-8000**

**reception@pineridgeequine.com | www.pineridgeequine.com**  
**2281 West 171<sup>st</sup> Street South | Glenpool, OK 74033**

*Thank you, ODS Sponsor, Pine Ridge Equine Hospital!*



# Events



Save the <sup>new</sup> date!

**ODS SPRING I & II**  
**RECOGNIZED SHOWS**  
**APRIL 30 & MAY 1 2022**

**TULSA EXPO FORD**  
**COLISEUM ARENAS**



*Thank you, ODS Sponsors:*

**PATRICK & VICKI**  
**MCDONIE**  
**@**  
**VINTAGE FARM**

*Thank you, ODS Sponsor, Horse Of Course!*

## The Horse of Course



506 W Will Rogers Blvd  
Claremore, Oklahoma  
918-341-6293  
11am-5pm  
Tuesday to Saturday



### No Drama EQ Saddle Pad

- 100% cotton keeps your horse cool and prevents overheating,
- High wither shape stays where you put it
- Machine washable,
- Supports a variety of billet angles!

Check out our website for our new arrivals and featured products!  
[www.thehorseofcourse.com](http://www.thehorseofcourse.com)



**J&T Farriers**  
Certified Farrier  
Certified Barefoot Trimmer

405-567-9328

[www.jtffarriers.com](http://www.jtffarriers.com)



*Thank you, ODS Sponsor, J&T Farriers!*



# Announcements

## Congrats Competitors of the Region 4 Champs in Iowa!

Several ODS members traveled to Cumming, Iowa for the USDF Region 4 Championships held September 23-26. If you see these fine riders and horses, please extend your congratulations to them for their excellent competition and top representation of Oklahoma Dressage Society riders!



*Nicole Bossler & Kelico:  
Champion, Intermediate 1 Jr/Yr  
5th, Intermediate 1 Freestyle (all divisions)*

*Kristin Knutson & Vashti  
Reserve Champion, Grand Prix  
Champion, Grand Prix Freestyle*



*Amanda Edwards & Jessanna:  
9th, Adult Amateur Equitation  
14th, 1st Level Adult Amateur*



*Erin Nelson & Sister Sarah:  
4th, Prix St. George  
6th, Level 4 Freestyle*



*Gwyneth Baggett & Renzi:  
Reserve Champion, Level 3 Jr/Yr*

**LATEST NEWS****The Dressage Foundation Updates****Upcoming Grant Deadlines:**

October 15: [Amanda Johnson Freestyle Fund for Region 2 & 4 Young Professionals](#)

November 1: [Para-Equestrian Dressage Fund](#)

November 15: [Oregon Dressage Society's Linda Acheson Education Fund](#)

**Fundraisers:**

This has been an incredible year for the Century Club! We, as a dressage community, are on pace for a record number of new members and have celebrated our 500<sup>th</sup> member. It's also **Century Club's 25<sup>th</sup> Anniversary!**

With so many new members, TDF needs support for the Century Club more than ever. To help with these costs, TDF has started a fundraiser on Facebook called "\$25 to Celebrate 25 Years of the Century Club." The goal is to raise \$2,500 to pay for 25 Century Club members. TDF is asking for \$25 donations. Please share in TDF's fundraiser and share this information with your friends: <https://www.facebook.com/donate/3125041057782805/>

**LOVE TDF A LATTE**

Monthly giving is an easy, almost painless, way to give. Go to <https://bit.ly/3zYlvap> to set up your monthly donation. You set it up automatically and can start at \$5 per month. You can also stop it at any time. Many of you know Region 4 Director Anne Sushko. She is a monthly donor and said, "It always surprises me at the end of the year to find that my 'small' contribution has added up to a nice donation. This is a terrific and easy way to participate in the development of our sport." Each one of you can make a big difference by joining. Link: <https://bit.ly/3zYlvap>

**TDF IS THINKING AHEAD TO HOLIDAY GIVING.**

TDF is thrilled to launch an online store with the help of Equestrian Team Apparel. If you'd like to order any TDF gear, please visit <https://equestrianteamapparel.com/collections/dressage-foundation>. A portion of the money raised will go right back to TDF! These make great Christmas presents!

**Upcoming Events:**

TDF will be heading to the **U.S. Dressage Finals in Lexington, KY!** They will have a booth there. Is anyone else planning to attend? Meet up with TDF representatives.

For quicker reminders on grant deadlines and finding out what TDF is doing, go directly to <https://www.dressagefoundation.org>



THE DRESSAGE FOUNDATION

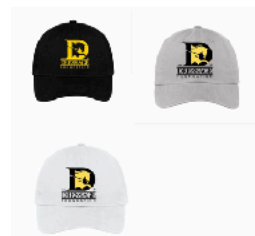
**Support TDF in Style with New Apparel!**

It's not too early to start your holiday shopping!

All new TDF apparel is now available through [Equestrian Team Apparel's website!](#) For every purchase made, ETA will donate a portion back to The Dressage Foundation.

Items include polo shirts, sun shirts, jackets, vests, and hats.

Attention Century Club members! Show your pride of membership by having "Century Club Member" embroidered on your jacket, vest, or hat! (See instructions on the order page.)

**Order Your TDF Apparel Today!**

<https://equestrianteamapparel.com/collections/dressage-foundation>



**Let's grow dressage...**  
*together*

By donating the cost of one cup of coffee a month, you'll be part of something big!

Give today at  
[dressagefoundation.org](https://dressagefoundation.org)







**Join us for our November Make Up Schooling Show & Clinic!!**

*When-* November 7<sup>th</sup>

Clinic is limited to the first 10 riders who sign up

Cost for clinic is \$25/riders

*Location-* YOLy Ranch

13401 S 129th E Ave Broken Arrow, OK 74011

Stalls are available!!

*Judge & Clinician-* Sherry Guess

For more information check out our Facebook Page!

Enter online at [www.showsecretary.com](http://www.showsecretary.com)



**Join us for our Schooling Show Championships!!**

*When-* Saturday November 13th

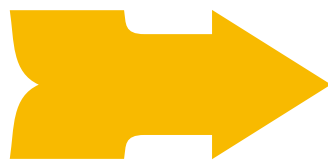
*Location-* YOLy Ranch- Broken Arrow, OK

*Judge-* Vickie Sharp



For more information check out our Facebook Page!

Enter online at [www.showsecretary.com](http://www.showsecretary.com)



**GCC Schooling Show Championships Qualification Information**

**Traditional Dressage:**

Training Level and below = 65%

First Level and above = 60%

**Western Dressage:**

Basic Level and below = 65%

Level One and above = 60%

To qualify, one must have three qualifying scores, one of which must come from the highest test of the level, and from at least two different judges.

If you have two of the qualifying scores, you may enter the schooling show in the morning to try to qualify for the championships in the afternoon!

Ride times for the Championships will be tentative given there may be additional entries once they qualify.

Visit [www.showsecretary.com](http://www.showsecretary.com) to enter!

\*Prix Caprilli, Suitability and Sport Horse Classes are not available for championships\*

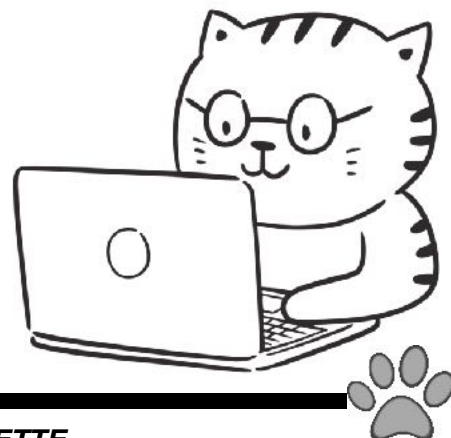




## Meet Ms. Rocket: ODS's New Editorial Staff Member

Please welcome Ms. Rocket, the new ODS Newsletter columnist who is ready to answer any of your burning questions (horse and farm -or mouse- related of course!). Ms. Rocket will answer your questions here in the ODS newsletters, so be on the lookout for them! If she doesn't know the answer, she will creatively make one up. This might be "interesting!"

Please send your questions to Ms. Rocket at: [ntraitlira19@gmail.com](mailto:ntraitlira19@gmail.com). She's looking forward to hearing from you!



## GCC SCHOOLING SHOW # 7 RECAP

BY: DEN BURDETTE

We had a lovely schooling day on September 19<sup>th</sup> for the GCC Schooling Show #7 at the beautiful YOLy Ranch in Broken Arrow. Our judge for the day was Roberta Clark (L). We had twenty-seven entries which included twenty-one traditional dressage rides from Intro level through Prix St. George, one sport horse in hand entry, and five western dressage rides from intro level through level 2.

One exciting highlight was rider- Bruce Macdonald, who rode his Century Ride in the show. The Century Ride is awarded special recognition by the USDF for rides at schooling or recognized shows where the combined age of the horse and rider equals a minimum of one hundred. Bruce was riding his first ever dressage test (intro test A) at the age of seventy-six, on his handsome bay Thoroughbred named "Norman," age 30. The pair scored an amazing 71%. Bruce told me that after many years of fox hunting, Norman would live out his retirement in the pasture after the show. Congratulations Bruce for earning your Century Ride award and happy retirement to his handsome old boy Norman!

I had the pleasure of competing myself on my paint pony Bubba Bailey and had a wonderful time. The footing at the facility was superb and everyone was so friendly! I want to note that before my ride, Roberta informed me they had the wrong test printed. Quickly, management was notified, and my ride postponed. No big deal as it gave me a few minutes to chat with fellow rides under the shade tree by the show arena and relax!

Big shout out to GCC President -Jess Korver, for making everything run so smoothly! Thank you, Susan Peacock, of [www.ShowSecretary.com](http://www.ShowSecretary.com) for handling the ride scheduling. Also big thanks to Kara Garde for running the entry table, running, and assisting Jess with the scoring! Thank you, Laurie Hedlund, for the help with the set up of the show arena! Additional thanks of course to the owners of YoLY for the warm hospitality and allowing us to have shows at your gorgeous facility!

We have three more schooling shows to end the 2021 season- October 16, November 7, and the Championship Show November 13. All shows are at YoLY. Remember if you are trying to qualify for a year end awards you need to be sure to get in your volunteer hours at one of our events!

I hope to see you there!


EQUINE MEDICAL ASSOCIATES INC.

2625 I-35 Frontage Rd. Edmond, Oklahoma 73013
405-348-3130



**OPTIMIZING THE  
HEALTH AND  
PERFORMANCE  
OF SPORT HORSES**

Hours of operation: M-F 8-5 24/7 Emergencies

Follow us on Facebook at: Equine Medical Associates, Inc. of Oklahoma

[www.emaokc.com](http://www.emaokc.com)



*Thank you, ODS Sponsor, Equine Medical Associates!*



# Events



Sunday September 19<sup>th</sup>- YOLy Ranch  
 Saturday October 16<sup>th</sup>- YOLy Ranch  
 (Will be offering a Halloween Costume Class!)  
 Sunday November 7<sup>th</sup>- YOLy Ranch  
 Saturday November 13<sup>th</sup>- Championships- YOLy Ranch

#### Locations:

YOLy Ranch- 13401 S 129<sup>th</sup> E Ave Broken Arrow, OK 74011

#### Show Manager-

September- Kara Garde- klynn\_garde@yahoo.com  
 Jess Holland-jesskorver15@gmail.com

**SCORES WILL COUNT FOR YEAR END AWARDS**

## GCC SCHOOLING SHOW #8 RECAP

**By: Den Burdette**

Our chapter schooling show #8 was held Saturday October 16 at YoLY Ranch in Broken Arrow. Lyn Francik (L) was our judge. We had a total of sixteen rides which included one western dressage ride, four eventing dressage rides, and eleven traditional rides. At the conclusion of the show, we had a costume class with three lovely entries! The day started a brisk 43 degrees and ended up 72 degrees when concluded at noon.

Due to the wet grass from rain the days before, the show was held in the indoor arena. Thank you to Laurie Hedlund and students for setting up the arena and judge's stand. The decorations were fabulous!

Bruce Macdonald has his 2<sup>nd</sup> Century Ride at the show aboard Wolfie earning a 66% in intro test A. Congrats, Bruce!

The high score ride of the day was Angela French on Litri Jap in training level test one with a score of 69.310!

Thank you also goes to Corinne for scribing. Thank you to Doris and Laura for running the gate. I was  
 (cont'd next pg)

*Show Secretary.com*

*Thank you, ODS Sponsor, Show Secretary!*



# Events

## Green Country Dressage Classic I & II

**March 12 & 13, 2022**



OKLAHOMA DRESSAGE SOCIETY

**at the Claremore Expo Center  
in Claremore, Oklahoma**

Facility is completely under cover, Indoor competition arena, Newly renovated barn

### Level 3\*

\*Applied for Developing Program Qualifiers (JR/YR/YA, YH & DH)

### Recognized by:

USEF, USDF, SWDC, ODS, TIP, NDPC

### 2022 Regional Championship Qualifier

### Prize List Available at:

[showsecretary.com](http://showsecretary.com)

### Judges

Judy Downer, "S" and Charlotte Trentelman, "S"

**TD**

Susan Lang, "R"

Secretary:

Susan Peacock

837 Glenlake Dr

Edmond OK 73013

405-760-0135

[susan@showsecretary.com](mailto:susan@showsecretary.com)

Show Manager:

Anne Kuhns

918-231-9777

[akuhns1122@gmail.com](mailto:akuhns1122@gmail.com)

### GCC SCHOOLING SHOW #8 RECAP

By: Den Burdette

(cont'd from previous pg)

the runner. Thank you to Susan Peacock of [www.ShowSecretary.com](http://www.ShowSecretary.com) for scheduling the rides. Big thanks to our chapter president- Jess Holland for managing the show and doing the scoring.

Our next schooling show is Sunday November 7<sup>th</sup> at YoY Ranch, and the Championship Schooling Show is on November 13<sup>th</sup> at the same location. If you would like to volunteer and or need your hours for yearend contact Jess Holland. The rules and form for year-end awards are posted on the GCC Facebook page.

Hope to see you at the next show!

### Just For Fun...

**How your horse sees  
himself after not  
spooking at the squirrel.**







## GCC News

### The Mi Dreamweaver+ Memorial Award (GCC)

GCC proudly announces a new award, launching this year in 2021! Now available for ODS GCC members, is the Mi Dreamweaver+ Memorial Award, courtesy of Ruthie Haney in honor of her late horse Dreamer.

- Adult Amateurs only.
- Open to all breeds.
- Entrants will submit either a creative writing or video project.
- If submitting a creative writing project, please include photos of you and your horse.
- Project will outline the rider's bond with their horse; any obstacles they have overcome, and the qualities the horse possesses that Dreamer had. (Patience, Wisdom, Courage, Kindness, Determination and Passion.)
- Entries are due November 1, 2021.
- Entries are to be submitted either by mail or email.
- Mail entries to Ruthie Haney: 35016 W Hwy 66 Bristow, OK 74010 or email to [dressage18@yahoo.com](mailto:dressage18@yahoo.com)
- The winner will be announced at the GCC Christmas/Year-End Awards Party.
- Prizes will include a rose neck garland with nameplate for their horse and the option of choosing a vest, jacket OR halter with nameplate.



Photos by Jeanie Eaton & Jessie Holland



### Application: Mi Dreamweaver+ Memorial Award

- Name: \_\_\_\_\_
- Horse's name: \_\_\_\_\_
- Breed: \_\_\_\_\_
- Creative writing or video project (circle one)
- Vest or Jacket or Halter with nameplate (circle one)
- Size of Jacket or Vest: \_\_\_\_\_

**Entries due 11/1/21**

### A Note From Ruthie Haney

I want to thank each one of you who took the time to apply for this award. When I lost Dreamer, I knew that I wanted to do something like this. He was more than just a horse to many people; he represented hope and determination. He was a teacher, a fierce competitor, a loyal and faithful friend. Together we defied the odds and overcame more than one obstacle; we had many highs and lows. But he never wavered from my side. Dreamer was a constant and unyielding presence up until the moment he passed away; even after I know he is still with me, always.

I felt that it was important to recognize this bond that we have with our horses, no matter what level of Dressage we are at. Dreamer encompassed what it is we seek in our Equine partners. He possessed every quality and more. I know that there are many more out there who have those same qualities. I greatly look forward to your submissions.

Good Luck and Happy Trails! - Ruthie Haney



# Events



**SAVE  
THE DATE!**

## **ODS Symposium with Lilo Fore April 2-3, 2022**

**Being held at the Tulsa State Fairgrounds, Tulsa, OK**

Originally from Germany, outside Dusseldorf, Liselotte (Lilo) Fore is the former owner of "Sporthorse America" in Santa Rosa, California for which she has been honored for her major role in raising the quality dressage training and horses to an international level. She served as an FEI 5 Star judge; in that capacity she has been a member of the Ground Jury for numerous international competitions such as the World Cup final in Las Vegas, Olympics, Pan American Games, and World Equestrian Games including WEG in Normandy. She is among the founders and served as chair of the USDF Instructor-Trainer Certification Program. She is continuously involved in many educational programs for Dressage trainers, teachers and judges throughout the United States. Among countless accolades and awards, in 2017, Lilo was inducted into the Roemer Foundation/USDF Hall of Fame for her contribution to the sport of dressage in the United States. Though now FEI 5\*retired, she had the privilege to serve on the Olympics in Tokyo on the JSP Panel, (Judges Supervising Panel).

**Further details will  
be sent out soon.  
Contact Pamela Byers at  
[pamela@galleryfarm.us](mailto:pamela@galleryfarm.us)  
or 405-990-8963 (text) to be  
put on the mailing list.**





High Hill Farm  
ODS Gold Sponsor



Wishing  
all the  
Competitor's  
Good  
Luck

High Hill is located on 80 acres  
with a 100x200 covered area,  
state of the art sound system and lighting,  
outdoor warm-up arena, and Introductory  
Level Cross County fences.

Available for: Day Rides • Clinics • Overnight • Shows



High Hill Farm, 13800 East Sorghum Mill Rd. Luther Oklahoma, 73054  
Call or text: Kathi Porter (405) 850-5862

*Thank you. ODS Sponsor, High Hill Farm!*



*Thank you, ODS Sponsor, Jaguar Land Rover Tulsa!*



JAGUAR LAND ROVER TULSA



(918) 665-4294 • [tulsalandroveronline.com](http://tulsalandroveronline.com) • 3905 S Memorial Dr, Tulsa, OK 74145





WARBURTON CAPITAL MANAGEMENT

*Warburton Capital can help you  
make work optional and maintain that status.*

## OUR SERVICES

- RELATIONSHIP MANAGEMENT
- ADVANCED PLANNING
- INVESTMENT CONSULTING

*We are independent, fee-only, fiduciary advisors  
who bring years of experience to bear on  
every aspect of your financial life.*

## WHO WE SERVE

We have developed a Consultative Wealth Management process to help our clients clarify their goals and make work optional in pursuit of financial peace of mind. We are independent, fee-only, fiduciary advisors who bring years of experience to bear on our clients' financial lives.

**(918) 794-3000 • 15 East Fifth Street • Suite 3675 • Tulsa, Oklahoma, 74103**  
**wcm@warburtoncapital.com • warburtoncapital.com**

*Thank you, ODS Sponsor, Warburton Capital!*

# MAINER FORD

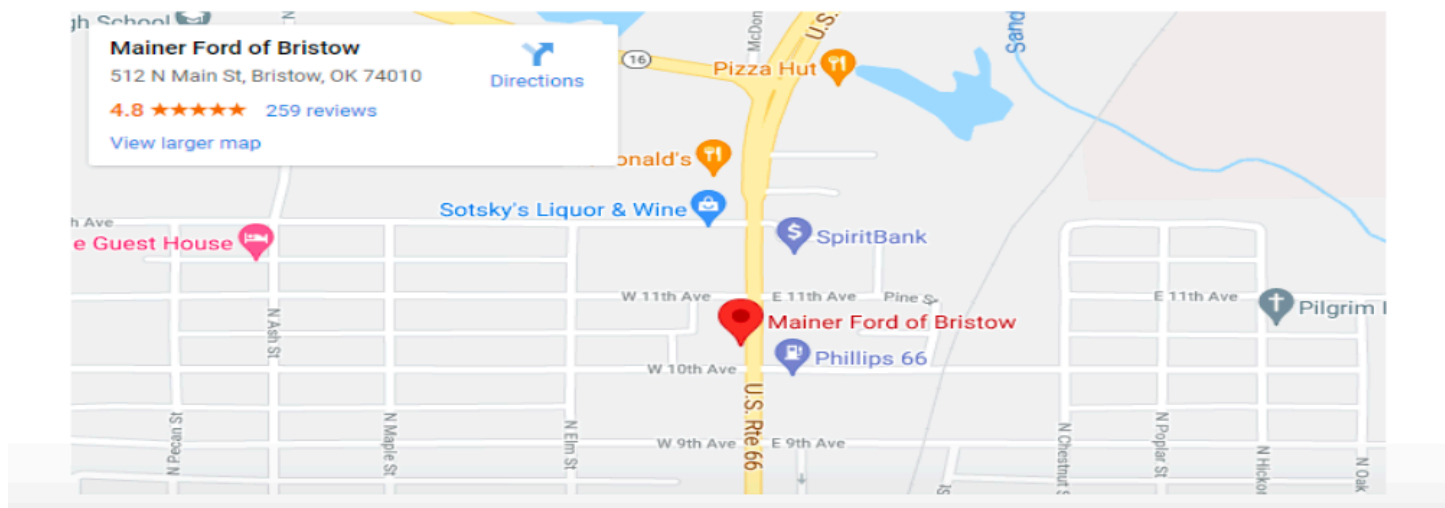
BRISTOW OKLAHOMA



**Mainer Ford of Bristow | 512 N. Main, Bristow, OK**

**918-367-3373 | [www.mainerfordofbristow.com](http://www.mainerfordofbristow.com)**

Whether you're looking for a new or used vehicle, Mainer Ford of Bristow has got you covered. We are happy to be the premier dealership for all your automotive needs in the Bristow, Tulsa, Sapulpa, Broken Arrow, and Chandler areas. We go above and beyond the standard car-buying experience to offer you expert financing options and maintenance service as well. Look no further than our facility for a top-of-the-line dealership experience you can't find anywhere else.



*Thank you, ODS Sponsor, Mainer Ford of Bristow!*



HORSES COULD FACE AN  
EVEN GREATER DANGER

Core EQ  
**Innovator**

## THE FIRST AND ONLY VACCINE TO HELP PREVENT ALL CORE EQUINE DISEASES IN ONE INJECTION.



Helps protect horses against rabies, tetanus, West Nile, and Eastern and Western equine encephalomyelitis

**99.7%**  
**REACTION**  
**FREE**

99.7% reaction-free in multiple field safety studies<sup>12</sup>



Convenient 1 mL dose – only available from a veterinarian in 10 mL vials to ensure horses receive wellness care from an equine health professional



Allows more flexibility in vaccination protocols with the ability to vaccinate against all core diseases in a single injection and tailor risk-based vaccines based on each horse's unique needs, one or more times per year



Designed to meet the needs of every horse, for use every spring



Backed by the Zoetis Equine Immunization Support Guarantee to provide veterinarians and horse owners peace of mind through unparalleled vaccination support

Questions: Contact your veterinarian or

Brett Burk, (405) 570-0570, [brett.burk@zoetis.com](mailto:brett.burk@zoetis.com)

**zoetis**

*Thank you, ODS Sponsor, Zoetis!*

Thank you,  
ODS Sponsor,  
Round Bale Saver!

## Rancher QUIZ: What's the

# CHEAPEST way to feed your hay?

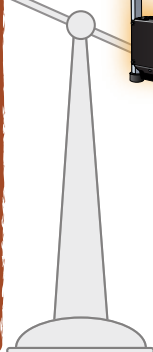
Old rust-away rings? **OR** NEW Round Bale Savers?

**Lets' do the math.**



'Cheap' Rings rust away, get damaged and must be replaced every few years at a cost of \$300-\$500 each. Even if you only replace them five times over the next 20 years that is still almost **TWICE the cost of ONE Round Bale Saver**. PLUS, old-fashion rust-away rings feed hay directly off wet dirt which can lead to mold, mildew and decay. That can be very unhealthy for horses and cattle and can waste up to 20% of your hay.

Amortized over the next 20 years... assuming a current national average of \$58/round bale with up to 20% wasted hay loss/ring at a feeding rate of just one bale/day, only during 3 winter months/year for 20 years, **each old-fashion rust-away ring (unit + hay loss) could cost \$23,000!**



Round Bale Savers could save you as much as **\$20,000 over 20 years!**

**NEW Round Bale Savers** have a ONE-TIME cost of just \$1,195 to \$1,595 with a fully transferable, pro-rated, **20-YEAR GUARANTEE!**

PLUS, Round Bale Saver's efficient ELEVATED design can cut hay loss to as little as a buck a bale!

By comparison, the total 20-year cost of each Round Bale Saver (unit + hay loss) is only about \$3,000!

Tired of having your rusty rings kicked around? Round Bale Saver is **BULL-PROOF • STUD-PROOF • RANCHER-PROOF!**

RANCHER DESIGNED + AMERICAN MADE + 20 YEAR GUARANTEE

**15 MODELS TO CHOOSE FROM**

**5**

**Round Bale Sizes:**

4X5, 4X6,  
5X5, 5X6,  
& 6X6

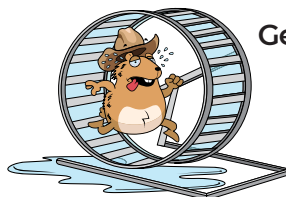
**3**

**Leg Heights:**

Standard 54" Cattle  
Custom 60" Horses  
Custom 48" Goats/Calves

**Customize your feeding experience!**

**YOU'RE A RANCHER, NOT A HAMSTER.**



Get off the 'ring,  
after ring,  
after ring,  
after ring'  
treadmill!

“

Dad always said,  
“Do it right the  
first time and you  
won't have to do  
it again.”

**Round Bale Savers are hands-down, the  
CHEAPEST WAY TO FEED YOUR HAY!**

Our innovative design is galvanized, powder coated, tougher, stronger, heavier, safer, tip-resistant, easier-to-load, easier-to-move, encourages new pasture growth, and unlike rust-away rings it does NOT leave unsightly pock marks in your pasture. (Yay! No more ugly, nasty, weedy, round-ring, field-zits).

**REMEMBER: You buy Round Bale Savers ONCE!**  
(You'll likely buy more, but NEVER wear one out!)

Farmers & Ranchers call them “Forever Feeders”

**GET YOURS TODAY!**

Call 918-514-0221 or go to [www.roundbalesaver.com](http://www.roundbalesaver.com) for a DEALER NEAR YOU.

Note: Patent pending. BoVeQ name is trademarked. Tractor of adequate size with front-loading double spears is required to load bales and to move unit. Assembly required. Units come in easy-to-assemble kits using standard tools. Average assembly time approx. one hour. Some dealers may assemble units for a nominal charge. Read all instructions carefully. If questions, please call BoVeQ Round Bale Saver at 918-514-0221 or go to [www.roundbalesaver.com](http://www.roundbalesaver.com) for more information.

Not for use with horned livestock.

## OKLAHOMA DRESSAGE SOCIETY MEMBERSHIP

ODS is a Group member organization (GMO) of Region 9 of the United States Dressage Federation (USDF).

New Membership \_\_\_\_\_ Renewing Membership \_\_\_\_\_ Information Change only \_\_\_\_\_

Last Name \_\_\_\_\_ First Name \_\_\_\_\_ USDF ID# \_\_\_\_\_

Address \_\_\_\_\_ City/State Zip \_\_\_\_\_

Daytime Phone \_\_\_\_\_ Evening Phone \_\_\_\_\_ Cell \_\_\_\_\_

Email \_\_\_\_\_ Birth date: Mth \_\_\_\_ / Yr \_\_\_\_

**USDF membership year is Dec 1<sup>st</sup> - Nov 30<sup>th</sup> . Membership dues are late after November 30<sup>th</sup> .**

ODS Membership – Select One Category. For family memberships consisting of more than two family members, please check both boxes for that section (Family and Add third family member).

\$54 Adult: Please check which applies: Open ☐ Amateur ☐ Vintage (50+) ☐ \$ \_\_\_\_\_

\$20 Charter / Life (for ODS founding members and those members who have lifetime memberships) \$ \_\_\_\_\_

\$44 Junior, under 18 as of Dec 1 of the current membership year \$ \_\_\_\_\_  
(For example, must be under 18 Dec. 1 of 2015 for 2015 membership)

\$64 Family (for two family members)

Name of second family member \_\_\_\_\_ Birth Day Mth \_\_\_\_ / Yr \_\_\_\_ \$ \_\_\_\_\_

\$10 Add third family member

Name of third family member \_\_\_\_\_ Birth Day Mth \_\_\_\_ / Yr \_\_\_\_ \$ \_\_\_\_\_

Chapter Membership – Check which chapter you would like to join. Chapter membership is not required, but is required to participate in the Chapter awards programs. Chapter membership cost is the same for an individual or a family.

\$10 Green Country Chapter (GCC) \$ \_\_\_\_\_

DONATION to ODS. (ODS is a tax exempt 501.c. organization) OPTIONAL \$ \_\_\_\_\_

***\$5 DISCOUNT for memberships received before November 30<sup>th</sup> .*** - (\$ \_\_\_\_\_)

**TOTAL AMOUNT ENCLOSED** \$ \_\_\_\_\_

Please tell us about your USDF/USEF accomplishments by checking any of the following boxes that apply. We plan to publish a list of member accomplishments on the website and in the directory.

☐ Gold Medal ☐ Silver Medal ☐ Bronze Medal ☐ USDF Rider Performance (Training, 1<sup>st</sup>, 2<sup>nd</sup>) ☐ "L" Judge

☐ USDF Instructor Certification - Level \_\_\_\_\_

ODS membership is an opportunity to promote Dressage in your community. The club is ONLY as good as it's most ACTIVE members. We need your help! What are your skill sets? Please circle all that apply.

Scribing ☐ Scoring ☐ Organization/Management ☐ Accounting ☐ Spreadsheets ☐ Arena Set-Up/Tear-D own ☐

Photography ☐ Fund Raising ☐ Other \_\_\_\_\_

*I hereby release the Oklahoma Dressage Society, it's officers, members, employees and agents from any liability and all claims of every kind, including costs, expenses, or attorney fees that might result from damages, injuries, or losses resulting directly or indirectly from the negligent act or omissions of the officers, members, employees or agents of the Oklahoma Dressage Society Club. I agree and sign below:*

Signature: \_\_\_\_\_ Dated \_\_\_\_\_ (Parent or Guardian Signs for Jr. Rider)

Mail this form, with check payable to "Oklahoma Dressage Society – Membership" to: Marta Koenig, PO Box 1101, Kellyville, OK 74039.

Email Nancy Trait-Lira: [ntraitlira19@gmail.com](mailto:ntraitlira19@gmail.com) Phone: 405-454-1766 (membership) Please allow 4 to 6 weeks for processing by USDF.





# Events Calendar

Go to the Events Calendar tab on [dressageoklahoma.org](http://dressageoklahoma.org) for more details about the events listed below. Registration information and forms are available through the Event Calendar tab. To get your event listed on the website, contact the ODS webmaster Lindsey Greco at [webmaster@dressageoklahoma.org](mailto:webmaster@dressageoklahoma.org). To get your event listed in the Centerline newsletter, contact the newsletter editor Melissa Furman at [newsletter@dressageoklahoma.org](mailto:newsletter@dressageoklahoma.org).

The most current, up-to-date event listings and information are posted online.

- Oct 24** ODS Volunteers Clinic - **FREE!** (Clark Farm @ 1413 E 64th St, Tulsa)
- Nov 7** GCC Schooling Show (YOLy Ranch, Broken Arrow)
- Nov 11-14** USDF National Finals (Lexington, Kentucky)
- Nov 13** GCC Schooling Show Champs (YOLy Ranch, Broken Arrow)
- Dec 1-4** USDF Convention (virtual, see page 3 for details)
- Mar 12-13** Green Country Dressage Classic Horse Show (Claremore)
- Apr 2-3** ODS Spring Symposium w/Lilo Fore (Tulsa)
- Apr 30-May 1** ODS Spring I & II Recognized Shows (Tulsa)
- Jan 22 (tent.)** ODS Annual General Meeting (date & details tentative; Tulsa Country Club, 7pm)
- Begins in 2022** USDF "L" Program (Begins in 2022)

## Monthly ODS Meetings Open To All Members

Every Oklahoma Dressage Society member is welcome to attend via phone the monthly Board of Directors meeting, usually held on the second Wednesday of each month starting at 6:30pm.

You may call in to attend virtually by dialing 712-432-3900 (conference code #535614).

**Next ODS Board  
Meeting:**

**Nov 10  
@ 7:00 pm.**



## ODS Board Members

President - **Kay Kamish** [president@dressageoklahoma.org](mailto:president@dressageoklahoma.org)  
 Vice President - **Lindsey Greco** [lindseymgreco@gmail.com](mailto:lindseymgreco@gmail.com)  
 Secretary - **Erin Boone** [erin.boone11@gmail.com](mailto:erin.boone11@gmail.com)  
 Treasurer - **Lyn Francik** [treasurer@dressageoklahoma.org](mailto:treasurer@dressageoklahoma.org)  
 Education - **Pamela Byers** [pamela@galleryfarm.us](mailto:pamela@galleryfarm.us)  
 Membership - **Marta Koenig** [martakoe@yahoo.com](mailto:martakoe@yahoo.com)  
 Vision - **Nancy Trait-Lira** [ntraitlira19@gmail.com](mailto:ntraitlira19@gmail.com)  
 At Large - **Nancy Trait-Lira** [ntraitlira19@gmail.com](mailto:ntraitlira19@gmail.com)  
 At Large - **Nancy Burba** [nobleroadeq@gmail.com](mailto:nobleroadeq@gmail.com)  
 At Large - **Pamela Byers** [pamela@galleryfarm.us](mailto:pamela@galleryfarm.us)  
 At Large - **Sherri Pittman** [sherriwads@aol.com](mailto:sherriwads@aol.com)

## ODS Leadership

Newsletter - **Melissa Furman** [newsletter@dressageoklahoma.org](mailto:newsletter@dressageoklahoma.org)  
 Scholarships - **Nancy Trait-Lira** [ntraitlira19@gmail.com](mailto:ntraitlira19@gmail.com)  
 Web Master - **Lindsey Greco** [webmaster@dressageoklahoma.org](mailto:webmaster@dressageoklahoma.org)

## Mailing Addresses

Please indicate on mailing envelopes to whose attention (person or office) you need to direct your correspondence. For example, "ATTN: Treasurer"

**ODS Mailing Address**  
 PO Box 1101  
 Kellyville, OK 74039

**ODS Street Address**  
 29395 South 4130 Road #B  
 Claremore, OK 74019